



Brunel
School

Child Friendly Safeguarding Policy



Brunel School has a Safeguarding Policy for staff, families, and Governors. This child friendly policy is designed for young people, and should be read as a guide to the main policy.

What is the Safeguarding Policy for?



To help you decide what could be a problem and where to get help and support. It is really important that you know who you can talk to and also to understand why you might need to talk to someone.



What is a DSL or DDSL?

You might have seen or heard the phrase DSL or DDSL, but what does it mean?

DSL stands for **Designated Safeguarding Lead** and DDSL stands for **Deputy Designated Safeguarding Lead**.

In every school there is always somebody who has the responsibility to keep you safe and all staff have to tell that person if they are worried about you. Staff have training and are taught how to keep children safe as it is the most important part of their job. If you don't know who your DSL or DDSL is, then ask a member of staff. It is the job of everyone that works at your school to keep you safe, so remember you can talk to any grown up that you trust.

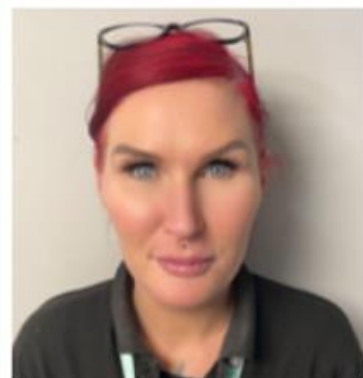
Brunel School's Safeguarding Team



Emily Johnston
Designated Safeguarding
Lead (DSL)



Ryan Distin
Deputy Designated
Safeguarding Lead (DDSL)



Jo Jones
Deputy Designated
Safeguarding Lead (DDSL)

Safeguarding is everyone's responsibility

If you are upset or worried about something that has happened to or you or someone else then please remember you can be brave and talk to someone who will listen to you and help you.

Examples of who you can speak to are:

- Tutor or teaching Assistant
- The Pastoral Team
- Headteacher or Assistant Headteacher
- DSL or DDSL
- Lunchtime Staff
- Admin Staff
- A grown up you can trust

**What happens when you talk
to someone about your
worries?**



If you speak to an adult, sometimes they will need to check things with your DSL or DDSL and then if they can deal with the issue themselves, they will. Please try and understand that staff and the DSL or DDSL will only want to help you and make you feel supported and better about the situation.

There are times though when they may need to contact some other agencies for support. These may be Children's Social Care (Social Workers) or Police. This is because schools can't do everything on their own and need to work with other professionals who are best placed to help with arranging other things. It might sound a little bit scary, but the Social Workers and Police will be specialist trained professionals who are great at helping children and young people. There are lots of other agencies who support children and their families as well and it isn't always that people need to have a Social Worker involved with their family. Sometimes people are Youth Workers or Mentors or Family Support Workers.

Don't worry, your DSL or DDSL will talk to you and explain all of this, and you can always go and ask them questions if you are unsure about anything.



What is child abuse?

Child abuse is when anyone under the age of 18 is either being harmed or not properly looked after. There are four main categories of child abuse:

1. Physical Abuse

hitting, smacking, shaking, throwing, burning, biting etc.

2. Sexual Abuse

Be aware this doesn't always mean touching a child. It could be someone making you watch things to do with sex or encouraging you to act in an inappropriate way.

3. Neglect

This means things like not providing meals or warmth or clothing. Or perhaps not taking you to the Doctors when you need to go. There may be lots of different reasons why a child is neglected, and it is really important that we know so we can help.


4. Emotional Abuse

This means when someone upsets you or makes you feel bad. If someone in your family says horrible things to you and makes you feel sad and worthless.

You have the right to be safe

We are here to help!

- Anything you tell us will always be taken seriously
- We will listen to you carefully
- We might ask you to tell us more about what's happening or explain in more detail
- Sometimes, we might have to tell the DSL, DDSL or headteacher
- We will support you
- We'll do everything in our power to keep you safe



If you have any questions about our Safeguarding Policy please ask the Headteacher **Vikki Alden**, the DSL **Emily Johnston** or the DDSL **Ryan Distin** and **Joanne Jones**.